

# Technical Datasheet

# PVC cove formers - PA

## SKIRTINGS & COVING

### DESCRIPTION

PVC cove former used to form a cove where floor coverings rise up to the wall. Usually used with a capping seal or a cap to cover the raw edge of the floor covering.

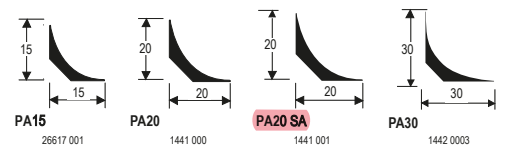
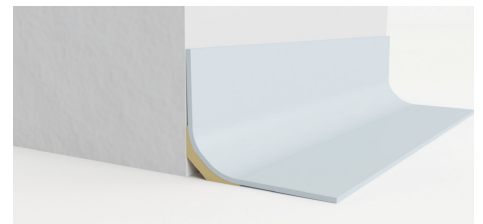
#### Key features:

- Perfect visual finish.
- Easy flooring maintenance and cleaning thanks to its round shape angle.
- Creates smooth angle under flooring for perfect hygiene and watertightness.
- 5 sizes available fulfilling every single demand and angle radius

#### Compatible flooring:

- Homogeneous & heterogeneous vinyls in rolls.
- Linoleum
- Wetroom floorings in rolls.

#### Main segments of application:



### TECHNICAL INFORMATION

#### Product

Size (mm)	PA15	2000 length x 15 width x 15 height
	PA20 / PA20 SA	2000 length x 20 width x 20 height
	PA30	2000 length x 30 width x 30 height

Unit weight (g)	PA15	121
	PA20	180
	PA20 SA	180
	PA30	340

#### Packaging

Pieces per box PA15 25 (50lm)

	Box size (m)	Box weight (kg)
PA15	2.5 x 0.125 x 0.115	2.4
PA20	2.07 x 0.09 x 0.085	5.36
PA20 SA	2.07 x 0.09 x 0.085	5.36
PA30	2.10 x 0.11 x 0.09	9

	Pallet size (m)	Pallet weight (kg)
PA15	2.5 x 0.8 x 0.5	130
PA20	2.1 x 0.8 x 0.8	150

PA30 2.05 x 0.69 x 0.81 270

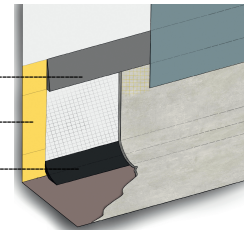
Min. order 1 box

### CLEANING & MAINTENANCE

No cleaning or maintenance required.

The above information is subject to modification for the benefit of further improvement. (11/20).

- Junction Profile **PJ30 SA** (ref.1418003)
- Pre-cut double sided tape (ref.26667000)
- Coveing Profile **PA20 SA** (ref.1441001)



### INSTALLATION

- To be placed behind the floor covering.
- Use an acrylic contact adhesive.
- Cut the profile to the desired length.
- Heat the cove former before application if needed.
- Spread adhesive on the backside of the coving with an appropriate brush.
- Cut the corners with help of a corner box/saw or dedicated scissors.
- Use a primer before installation.

### ARTICLE CODE

PA15		PA20	
SAP Code	EAN Code	SAP Code	EAN Code
26617 001	3423128425918	1441 000	3423128397581
PA20 Self-Adhesive		PA30	
SAP Code	EAN Code	SAP Code	EAN Code
1441 001	3423128637557	1442 000	3423128397598

Dark grey  
RAL:  
5000  
NCS:  
S 5502 B

